



Miraloma Life

www.miralomapark.org

MPIC Holiday Party and Potluck Cook-off

by Dan Liberthson

As always, the 2012 MPIC Holiday Potluck Party wowed everybody in attendance—somewhere between ninety and one hundred lucky souls. Many thanks to our neighbors who came and brought their best dishes for all to share, and to the wonderful entertainers who, along with the traditional champagne punch, amped up the cheer: the inimitable Boswick the Clown and Laura Lee Brown & Company band. And a special thank-you to my fellow MPIC Board members who gave their time and energy to make the event possible.

(continued on page 2)

From the President's Corner

by Robert Gee, MPIC President

Greetings and Happy New Year to everyone in Miraloma Park! 2012 is now history books and 2013 off to a wet start.

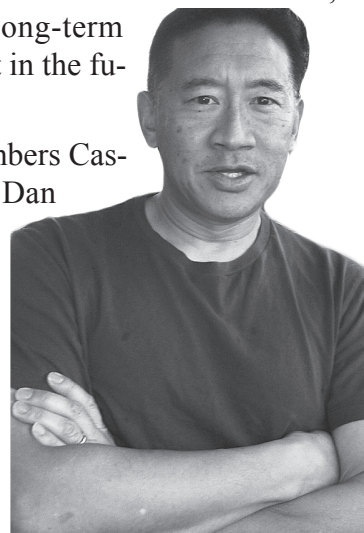
The full MPIC Board, currently 14 volunteer members (up to 17 are allowed per the By-laws), meets only once a month. Much of the Club's work is done by standing committees, to which I want to introduce you.

Safety—This committee includes Board Members Karen Wood (Chair), Tim Armour, Joanne Whitney, and Brian Stone, and former MPIC president Mike Naughton. Working closely with the Captain and officers of Ingleside Police Station, the Safety Committee tries to ensure a police presence, necessary enforcement, and the receipt of the latest information on crimes in our neighborhood. Its members disseminate crime notifications, advocate for community policing, abate drug houses, and work with the offices of the City Attorney and District Attorney. They also work on Code enforcement, fire prevention on Mt. Davidson, and disaster preparedness programs, including NERT and a long-term neighborhood resiliency program that you will hear more about in the future.

Clubhouse Maintenance—This committee includes Board Members Cassandra Mettling-Davis (Chair), Thad Sauvain, Gary Isaacson, Dan Liberthson, and Kathy Rawlins, and our Clubhouse manager, Steve Davis. Their mission is preserving, maintaining, and operating the MPIC Clubhouse located at 350 O'Shaughnessy, which was donated to the Club in the 1940s by the developer.

Newsletter—Monthly publication (except in July and August) of the 12-page *Miraloma Life* is supervised by Board Member/Editor Dan Liberthson, with layout assistance by Chris Long.

(continued on page 4)



Events in January

3 MPIC Board Meeting*
Thursday, 7 pm
MPIC Clubhouse

19 Shakespeare 2013
(sfsota.org)
7:30 pm, Ruth Asawa SOTA

24-6 Poetry Café
(sfsota.org)
7:30 pm, Ruth Asawa SOTA

Events in February

7 MPIC Board Meeting*
Thursday, 7 pm
MPIC Clubhouse

* Members wishing to address the Board of Directors should call 281-0892 to arrange to be placed on the agenda.

Holiday Party and Potluck Cookoff

(Continued from page 1)

For their contributions, we thank the following merchants who donated prizes for our culinary efforts, and encourage everyone to patronize your neighborhood merchants:

- Bird & Beckett Books and Records of Glen Park on Chenery
- Critter Fritters of Glen Park on Chenery
- Mollie Stone's Tower Market
- Papenhausen Hardware on West Portal
- Starbucks on Portola
- The Cheese Boutique of Glen Park on Chenery
- Whole Foods on Ocean Avenue

And here are the prize winners in this year's potluck cook-off :

Appetizer—1st *BBQ pork ribs*, Carol Lei; 2nd *Rudolph's jet fuel*, Ameg Vasisht; 3rd *Poke*, Amy Shimm

Soup/Salad/Side—1st *Stuffed potatoes*, Cathy Chin; 2nd (tie) *Fox surprise*, Michael Fox & *Larb salad*, Jesse Coartie

Main—1st *Ravioli Marinara*, Joanne Whitney; 2nd *Stir-fried chicken celery*, Ingrid Chu; 3rd (tie) *Pasta primavera*, Shannon Chu & *Mac & cheese*, Carl Schick

Dessert—1st *Sam's kiss cake*, Sam Ludeke; 2nd *Brownies*, Mark Pisram; 3rd *Raspberry almond flan*, chef unknown



Kids Dig Boswick the Holiday Party Clown



Even "the help" Get a Break!

Sue Kirkham Realtor

Ca. Lic. #00898385

www.suekirkham.com



For Miraloma Park home Sellers seeking:

- Highest Sales Prices
- Seller only representation
- State of the art marketing plan and tools
- Expert preparation and negotiation skills
- Honesty, integrity and good judgment
- Attention to detail.

Full time Realtor in San Francisco since 1985.
Neighborhood knowledge, and much more.

Putting YOUR interests first

Phone: 415-229-1297

Home office: 415-333-9840

www.suekirkham.com

info@suekirkham.com

www.SueKirkham.com for selling guide, resources & more

CALL OR E-MAIL FOR A FREE EVALUATION OF YOUR HOME

<u>ACTIVE LISTINGS</u>		<u>SOLD</u>	
318 Cresta Vista	2/1	\$650,000	733 Rockdale 2/1 \$699,000
355 Teresita	4/2	\$990,000	775 Myra 3/2 \$705,000
901 Rockdale	3/2	\$1,100,000	941 Teresita 2/1 \$730,000
<u>PENDING SALES</u>		375 Los Palomos	3/1 \$747,330
658 Rockdale	2/1	\$699,000	360 Cresta Vista 3/2 \$845,000
128 Marietta	2/2	\$699,000	139 Chaves 2/1 \$875,000
136 Molimo	3/1.5	\$715,000	535 Teresita 4/3 \$890,000
795 Teresita	3/1.25	\$999,000	36 Juanita 4/3 \$945,000
			195 Juanita 4/3 \$1,187,500



Police Make Arrests in Massive Theft of Electronics—Is Your Stolen iPhone in this Stash?

San Francisco police have arrested three suspects in a massive stolen property fencing ring operation specializing in electronic items. Over a thousand items, almost entirely electronics, including laptops, cell phones, hard drives, and accessories, were located inside the suspects' residence, storage facilities, vehicles, and other locations. Police value the property at approximately \$500,000 (plus \$32,000 in cash).

The Central Station Investigative Team has posted photos of the property recovered at web location <http://www.sanfranciscopolice.org/index.aspx?page=3763&recordid=577>.

If you are a victim of theft who can identify the items, e-mail SFPD's Central Station using the link provided on the above webpage. Instructions for submitting a claim are included on the webpage. You must have either a case number from the reported theft or proof that the property belongs to you. Police have identified and photographed almost all of the recovered items, but some items such as "SD Memory Cards" are still being processed.

NOTE: The SFPD recommends taking a photo for your records of the serial numbers of items that thieves like: electronics and bikes, for example.

Notice: San Francisco Department of Environment Door-to-Door Outreach in Ingleside District

SF Department of the Environment staff will be conducting door-to-door outreach in Miraloma Park, Forest Hill, West Portal, Westwood Park, and the Mount Davidson area. A team of about twelve people will be knocking on the doors of homes to let homeowners know about an energy efficiency program. This program was described in the September 2012 *Miraloma Life*. Team members wear a brown vest with green lining and the Department logo on it. They also have City-issued ID badges. They will conduct this outreach until mid-February on Tuesday, Wednesday, and Thursday evenings and on Saturdays from 10-3. The MPIC and SF Police caution all residents not to permit entry to your residence of anyone unfamiliar unless they display proper identification.

Summary of MPIC Board Meeting on December 6, 2012

by Dan Liberthson and Carl Schick

On-Line Votes: Two motions, both approved: 11/20—contribute \$125 to the Coalition for SF Neighborhoods (CSFN) as a sponsor for their holiday party; and 11/29—allow free use of Clubhouse for Neighborhood Emergency Response Team (NERT) meetings as long as they don't conflict with a paid rental.

Presentation: Ryan Sims talked about the private social neighborhood network called *Nextdoor* and specifically *Nextdoor Miraloma Park*. Nextdoor.com's mission is to connect neighbors with one another, building community and making neighborhoods safer by increasing awareness of neighbors, disaster planning outreach, etc. Daniel Homsey discussed neighborhood resiliency after a disaster and how community building with *Nextdoor Miraloma Park* and the MPIC can prepare the neighborhood. Residents who want to learn more about Nextdoor can visit <http://miralomapark.nextdoor.com>.

Treasurer's Report (T Sauvain): The MPIC's net worth decreased by \$3,614.09 from October to \$25,51.90. November's rental income was the highest ever: \$5345 from single-event rentals, board member rentals, and recurring rentals. Net worth fell despite this vigorous rental activity because the income for those rentals was actually deposited in previous months. November income from

(continued on page 5)



- RESIDENTIAL
- COMMERCIAL
- SALES
- REPAIRS

CARLOS CARPET & LINOLEUM SERVICE

FREE ESTIMATES

National Brand Names
Karastan, Wool, Armstrong,
Shaw, Mohawk, Coronet
Many colors in stock

CARLOS RIOS
415-533-3697
600 ROCKDALE DR.
S.F. CA. 94127

Cassandra Mettling-Davis, Architect 415 664 3400

Kitchens, Bathrooms, Complete Remodels and Additions
CMDarchitecture.com 801 Portola Dr Suite 104 SF CA 94127

CMD Architecture | San Francisco



From the President's Corner

(Continued from page 1)

Delivered to all 2,200 Miraloma Park homes, the newsletter is the principal means by which the Club disseminates information to the neighborhood, promotes neighborhood identity, and raises community awareness. All are welcome to submit articles for consideration, and we especially welcome articles about issues that impact our neighborhood and about the excellent quality of life here. Board Member Brian Stone oversees the paid advertising that partially funds *Miraloma Life* and also promotes local businesses. Gary Isaacson, another Board Member, manages a very responsible team of four neighborhood teens who deliver the newsletter on the first weekend of the month.

Website—Long-time Miraloma Park resident Ron Proctor maintains our website, which includes a community message board in which we encourage all neighbors to participate. You can sign up for automatic notification of new postings to our message board. Also on the site are current and archived issues of *Miraloma Life*, information about the Club's activities, and links to many neighborhood resources. Ron works diligently to protect the website and message board from the constant attacks of hackers.

Events—This group includes Board Members Shannon Chu (Chair), Thad Sauvain, and Carl Schick. They plan and expedite various community-building events held at the Clubhouse throughout the year.

Traffic and Transportation—Chaired by Board Member Karen Breslin, this committee deals with traffic and transportation issues in our neighborhood, such as the City's long term Teresita Blvd. traffic calming project, preserving MUNI service, and bicycle and traffic issues along Portola and the merchant corridor.

Membership—As chair of this committee, I am helped by Board Members Karen Wood and Brian Stone, as well as long-time resident Vivienne Antal. Membership in the MPIC is optional. This committee works to maintain and increase membership, which now totals roughly 600. We remind members to renew their membership and publicize the benefits of joining the Club and participating in its accomplishments. Increased membership gives the Club more clout in negotiations with City government and other organizations whose actions may impact Miraloma Park. Membership dues help to defray the cost of our monthly newsletter, club activities and events, and

January 2013 *Miraloma Life* Page 4

Clubhouse maintenance.

Zoning and Planning (ZAP)—This committee includes Board Members Cassandra Mettling-Davis (Chair), Tim Armour, Karen Breslin, Carl Schick, and Dan Liberthson. The ZAP committee works to promote consistent, quality architectural design as exemplified in the Miraloma Park Residential Design Guidelines, written by the committee in cooperation with the Planning Department and adopted by the Planning Commission in 1998. The committee advocates to ensure that our neighborhood retains its RH-1 designation for single-family occupancy homes. Committee members attend city hearings, submit written and verbal testimony about residential projects, and work closely with many City departments.

City-Wide Issues—The MPIC is a long-term member of two umbrella organizations: the Coalition for San Francisco Neighborhoods (CSFN) and the West of Twin Peaks Central Council (WOTPCC). These two organizations advocate on behalf of individual neighborhoods with respect to many city-wide issues, including zoning, transportation, and police. Board member Karen Breslin is our principal delegate to the monthly CSFN and WOTPCC meetings; Tim Armour and Karen Wood are alternate delegates. In addition, Joanne Whitney participates in the Ingleside Community Police Advisory Board.

Graffiti—Board member Sue Kirkham leads other Board Members and residents in the fight against graffiti in our neighborhood. We have a zero-tolerance policy for graf-

(continued on page 10)



Handyman Services by Manuel Garcia 415-438-0987

Free Estimates

Available 24/7 for emergency calls
with established customers

Excellent work! Neighborhood references available

Responsible, Reliable - - Reasonable Rates!



Rough & Finish Carpentry

Plumbing

Painting

Plaster/Crack Repair

Fire & Water Damage

Kitchens, Closets, Bathrooms, Decks

Install/Replace Flooring

Wood Floor & Cabinet Refinishing



December 6, 2012 MPIC Board Meeting

(Continued from page 3)

member dues was \$164. Over and above normal monthly expenses (*Miraloma Life* costs, utilities, etc.), we paid \$125 in dues to the Coalition for SF Neighborhoods, \$720 to Navigator's Printing for MPIC letterhead and envelopes, \$600 for gardening (for both November and December), and \$600 in holiday party costs (for the band and door change). The Reserve Account total is \$15,200.

Committees: *Safety*—Please see articles in this issue. **Reminder:** Please spread the word that if you see something suspicious, immediately call 9-1-1! **Membership** (R Gee)—As of 12/6/2012, the MPIC had 517 members. The annual membership letter will be inserted into the January 2013 *Miraloma Life*. Email reminders are being sent to members with November, December and January membership expirations. **Events** (S Chu)—Holiday party a success. Full accounting next month. **Clubhouse Maintenance** (CMD)—T Sauvain moved to give rental manager Steve Davis a \$250 bonus (approved). The contractor who resurfaced the parking lot requested full reimbursement for materials plus labor, an amount \$1400 over agreed-on price. The Board was dissatisfied because he did not inform us of the overrun material costs in a timely manner and the quality of work was poor (cracks and uneven areas remained). CMD moved to pay him the full amount he requested (disapproved). T Sauvain moved to split the difference of the excess cost (approved). The Board seeks someone to pick up mail from the Clubhouse and distribute it to appropriate Board Members and to set out and put back the garbage cans each week. R Gee will reach out to high school kids or anyone on Del Valle near the Clubhouse for the garbage detail. K Breslin volunteered to pick up and distribute the mail for now. R Gee spoke with neighbors who complained about loud music at the last Clubhouse rental (a party). This renter was also responsible for damage to

the Clubhouse floor, has apologized, and is sending in a contractor to give an estimate for repairs. *Newsletter* (D Liberthson)—D Liberthson moved to give a \$125 year-end bonus to Chris Long, who does the newsletter layout and T Sauvain moved to give a \$65 bonus to each newsletter carrier (both approved).

Delegate Reports: West of Twin Peaks Central Council (WOTPCC, K Breslin)—Food trucks may return to West Portal in the Spring. Coalition for SF Neighborhoods (CSFN, K Breslin)—Motion passed by CSFN to support SFENUF, a group opposing the installation of new parking meters in SF. Motion to reimburse Kathy Howard for her work on No on Prop B also passed. Plan to open a restaurant at Marina Green discussed, a concern because it is an effort by Rec and Park to privatize open space. In 1935, California deeded the Marina Green to San Francisco with the provision that the open space could never be used for commercial purposes. In 1943, the City let the Navy build a small building on the seawall at water's edge at the end of Fillmore Street as part of naval operations in WWII. After the war, the Navy turned the structure over to the City with stipulations that it be demolished, but it was not demolished. Rec & Park is now proposing to lease the structure to Woodhouse Fish Restaurant. The CSFN had voted to oppose the commercial lease, and sent a letter to Rec & Park stating that position. A representative from the Marina neighborhood checked the file that Rec & Park had sent to the Board of Supervisors to study, and found that the letter was not in the file. Another individual had attached the letter in his/her packet which was in the file, but the original letter was not. The delegate cautioned CSFN delegates that they should be concerned that Rec. & Park may be attempting to suppress their position on this issue.

Upcoming Ruth Asawa SOTA Events

Media Night (short films): 7:30 pm, Jan. 17 and 18

Shakespeare 2013: An Elizabethan Evening (theater), 7:30 pm, Jan. 19

Poetry Café: 7:30 pm, Jan. 24- 26

Senior Audition Showcase Drama Studio: Feb 6, 7:30 pm; Feb. 7, 4:30 pm

Tickets available at the door for all events; for more information visit sfsota.org.



FARMERS



Steve Murphy

Home • Life • Apartment
Auto • Renters • Business

415-661-2060

801 Portola Dr Suite 208
San Francisco CA 94127

25 year

Miraloma Park
Homeowner!

www.farmersagent.com/smurphy1



CHARLES BLACK
B R O K E R

415.353.5789
CBlackSF@aol.com

BUYING OR SELLING A HOME?

Call me today for a
FREE, NO OBLIGATION MARKET ANALYSIS
of your home – or to locate and visit
available properties meeting your needs!

Competence and Integrity

Strong Negotiating Skills

30 Years of
International Business Experience

Miraloma Park Homeowner
and Resident Since 1994

Third Generation San Franciscan



www.apr.com



Host an

INTERNATIONAL STUDENT!

- Seeking a new and exciting cultural experience?
- Would you like to host a short or long-term international student who is studying English?
- Does your home have wireless internet access?
- Do you live near public transportation and within 45 minutes of downtown San Francisco?

If you answered “Yes” to these questions, please contact **Converse International School of Languages** to learn more.



International School of Languages
605 Market Street, Suite 1400
San Francisco, CA 94105
www.cisl.edu
(415) 971-3227
sfhomestay@cisl.edu

From the Safety Committee: Help Prevent West Nile Virus!

The San Francisco Department of Public Health (SFDPH) advises residents to comply with Health Code public nuisance prevention provisions, including:

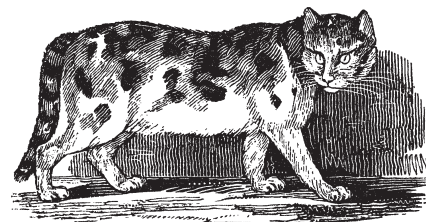
- “Drain all standing water from the property, such as saucers below flower pots, hot tub covers, wading pools, hollow stumps, and trash containers; remove tires and car parts or store them indoors. SFDPH recommends using “non-chemical insecticides such as BTI ‘dunks’ that can be purchased at garden supply stores and used in pools that cannot be drained.”
- “Cut back overgrown vegetation, especially if it is growing in the shade and do not over water your yard. Keep grass cut short and let surface soil on ground and in pots dry before watering. Keep ground and drains clear of leaf litter.”

These and other advisories are on the SFDPH website at www.sfdph.org/dph/files/EHSdocs/Vector/WestNileVirus_MosquitoFact%20Sheet.pdf.

SF Health Code Sec 581. Prohibited Health Nuisances

(b) The following conditions are hereby declared to be a public nuisance: (8) Any noxious insect harborage or infestation including, but not limited to cockroaches, bed bugs, fleas, scabies, lice, spiders or other arachnids, houseflies, wasps and mosquitoes, except for harborages for honey-producing bees of the genus *Apis* regulated by the California Food and Agriculture Code Sections 29000 et seq. which are not otherwise determined to be a nuisance under State law.

http://www.amlegal.com/nxt/gateway.dll?f=templates&fn=default.htm&vid=amlegal:sanfrancisco_ca



Izabella's Beauty Salon	21 Evelyn Way San Francisco, Ca. 94127	Wash Cut Perm Style
W: (415) 564-8100 C: (415) 254-6175		
<u>Salon Hours</u> Tue-Sat 9:00am-6:00pm		

From the MPIC Safety Committee: Salmonella Outbreak in Bay Area Songbirds

(excerpted from Wildcare, www.wildcarebayarea.com)

An outbreak of avian Salmonella is killing songbirds in the Bay Area. The disease is spread from bird to bird primarily at bird feeders and bird baths. WildCare and other local wildlife centers have received multiple calls about ill and dead songbirds in people's yards, so we suspected an outbreak of Salmonella. Our diagnosis was confirmed when lab test results from deceased patients that showed signs of Salmonella poisoning came back positive. We have treated more than a dozen songbirds showing symptoms of Salmonella poisoning in our wildlife hospital in the past few weeks.

Salmonellosis is a common cause of disease and death in wild birds. Bird feeders bring large numbers of birds into close contact with each other, which means diseases can spread quickly through multiple populations. Salmonella bacteria is primarily transmitted through contact with fecal matter, so birds at a crowded feeder are much more likely to be exposed than birds in a wild setting.

Sick birds may be lethargic, puffed up and thin and may have swollen eyelids. A bird sick with Salmonella poisoning may also be seen resting with beak tucked under wing, and may be the last bird to take flight if the flock is startled. You can tell these sick birds don't feel very good!

Frequently Asked Questions About This Outbreak

How likely is it that kids or adults could get Salmonella from handling the bird feeder or feed?

Salmonella is primarily transmitted through contact with fecal matter, so, according to the Center for Disease Control (CDC), avoiding hand-to-mouth contact during, and washing hands thoroughly with soap and water after, contact with birds or their fecal matter will minimize or eliminate any risk. Wash your hands thoroughly with soap and water right after touching animals, their food (e.g., dry dog or cat food, frozen feeder rodents, etc.) or anything in the area where they live and roam. Running water and soap are best. Use hand sanitizers if running water and soap are not available. Be sure to wash your hands with soap and water as soon as a sink is available. Adults should always supervise hand washing for young children. Do not let children younger than 5 years of age, older individuals, or people with weakened immune systems handle or touch high-risk animals (e.g., turtles, water frogs, chicks, ducklings), or anything in the area

where they live and roam, including water from containers or aquariums.

How can I avoid transmitting Salmonella from the birdfeeder in my yard into my home? The CDC recommends always cleaning items that have been in contact with animals outside. If it is necessary to clean a feeder indoors, the sink or tub used for cleaning should be thoroughly cleaned and disinfected with a bleach solution afterward. Common sense precautions to avoid tracking bird feces into the house should be taken including checking shoes for fecal matter.

Are the domesticated birds in my home at risk? Check with your veterinarian if you are concerned about your pet birds. Salmonella is transferred between birds from contact with fecal matter, so making sure domestic birds do not come into contact with the droppings, seeds or hulls from your wild bird feeders is the first step to ensuring their safety.

Can my cat get Salmonella from an infected bird?

Check with our veterinarian if you are worried about your cat. Studies have shown that it is possible for predator animals to get Salmonellosis from eating their prey, and cats can contract the disease. Cats under stress or with weakened immune systems are more susceptible to the infection. **WildCare strongly recommends keeping your cat indoors to prevent him or her from coming in contact with sick birds or other hazards,** but also to protect the songbirds that are drawn to your yard by your feeder.

Is my dog likely to get Salmonella from playing in the yard? Check with your veterinarian if you are concerned about your dog or other pets. Salmonella is transferred from contact with fecal matter, so making sure domestic pets do not come into contact with the droppings, seeds or hulls from your wild bird feeders is the first step to ensuring their safety.

How often should I rake the hulls and fallen seed under my bird feeders? According to Melanie Piazza, WildCare's Director of Animal Care, for optimal bird health, and especially in an outbreak situation like this one, hulls should be removed every night. The problem with feeder seed and hulls is that the birds sit above and knock seed down to the ground, but also drop their droppings down. As Salmonella and other bacteria are transmitted through feces, this means a concentration of potentially infected feces beneath the feeders which can be dangerous to ground-feeding birds, even when there isn't an epidemic. In fact, Melanie says that raking the hulls isn't neces-

(continued on page 8)

**From the MPIC Safety Committee:
Salmonella Outbreak in Bay Area Songbirds**

(Continued from page 7)

sarily sufficient. The best choice is to put a pan or, even better, a sheet held down by rocks, under the feeders and remove it and dispose of the hulls every night. This will also prevent rat and mouse infestations, which is a bonus.

Why do you recommend against wooden bird feeders?

WildCare still recommends against wooden bird feeders for the following reasons: 1. Wooden bird feeders sit outside 24 hours a day and get cracked, soft and moldy which, Salmonella aside, can be detrimental to songbirds. 2. The wood used for bird feeders is usually not the same hardwood used for cutting boards and softer woods are more likely to mold and rot, trapping bacteria. People are often less likely to want to bleach their wooden feeders because frequent soaking in bleach (especially of feeders made of pine and softer woods) will ruin them. A plastic feeder will last longer through the recommended bleach soakings and can be rinsed and dried more thoroughly. The main point, however, is no matter what kind of feeder you have, be sure to keep it clean.

Will bleach harm the birds? What if some of it gets on the bird food? Please be sure to always THOROUGHLY

(continued on page 9)




Phone: 415.244.0701
help@kuhnline.com

www.kuhnline.com
Complete computer support for your home or business

Based in Miraloma Park
Available for Housecalls
Over 10 Years Experience
Free Estimates

virus cleanup | backups | data recovery | wireless networks | file/printer sharing | email | mobile devices | desktops | laptops | Windows | Mac



MELINDA ATTAR

Cleaning Service
Serving the Community Since 1986

Local References Available (415) 640-2839



DONNA SULLIVAN
Your Miraloma Neighbor Since 1986

"Because I live in the neighborhood, I am a relentless advocate of our homes and quality of life"

22 years of experience combining state of the art marketing with old fashioned personal service.

Check out my last three 2012 neighborhood listings:

www.484lospalmos.com
Listed \$849,000 Sold \$915,000

www.514lospalmos.com
Listed \$799,000 Sold \$855,000

www.209stillings.com
Listed \$899,000 Sold \$1,035,000

Donna Sullivan, Realtor
415-370-8845
donnahouse@aol.com
DRE# 01063580



Call Me. I'm At Your Service

What are you doing this Sunday?



invites you to worship with us.

Sunday Service at 11am (Jr. Church at 11:30am)

Worship led by Team Pastors Jason Hotchkiss, Rajiv Pathik, and Tobee VanderWall

Please call (415) 379-2000 to find out where we'll be meeting this Sunday. We hope to see you there!

From the MPIC Safety Committee: Salmonella Outbreak in Bay Area Songbirds

(Continued from page 8)

RINSE the feeders and baths you have bleached, and allow them to DRY COMPLETELY to prevent any contamination of bird food. If properly rinsed and dried, using bleach on feeders and baths will not pose harm to the birds. However, any bleach residue on feeders or food is bad for the birds.

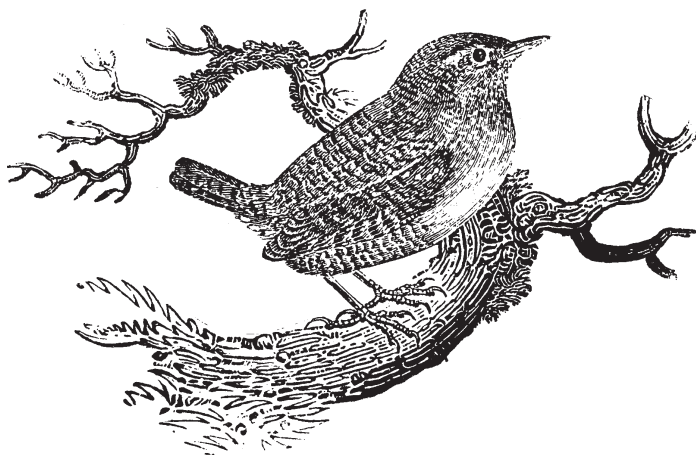
Can Salmonella survive on an all-metal bird feeder?

Yes. The bacteria reside in the birds' fecal matter, and fecal matter can stick to metal surfaces. Clean all feeders, no matter of what material, by scrubbing well to thoroughly remove any stuck-on debris or residues, bleaching in a 9:1 bleach solution (nine parts water to one part bleach) for 10-20 minutes, rinsing thoroughly and allowing them to dry completely.

Can the owls and other raptors in my neighborhood contract Salmonella from their songbird prey? Yes, but the impact seems to be less in larger predatory birds. WildCare has not gotten any raptors that tested positive for Salmonella as a cause of death. Many of the raptors without obvious injuries that we've taken in this month have tested positive for rodenticide poisoning, which is another serious issue facing wildlife.

WildCare discourages the feeding of any wildlife.

However, we recognize that millions of people love their bird feeders! If you are feeding birds, you have a responsibility to the birds and local wildlife to follow the "intelligent feeding guidelines" listed above as endorsed by WildCare, the Audubon Society and the Cornell Lab of Ornithology.



Join or Renew Your MPIC Membership Using PayPal, a Credit Card, or a Check

by the MPIC Membership Committee: Vivienne Antal,
Robert Gee, Karen Wood, and Brian Stone

If you are one of the 82 members who joined MPIC or renewed your membership back in January of 2012, your membership expired on December 31, 2012. So it's time again to renew! The MPIC relies on a large membership to advance our mission of safeguarding and improving the quality of life in Miraloma Park. The larger our membership, the more effective we are as a community advocacy organization. Your membership means you support our efforts to sustain and improve the quality of life in our neighborhood.

You can join or renew your membership by using your PayPal account or a credit card. Just go to our home page at miralomapark.org and click the link on the right called "Join - Renew - Participate" and you will be taken to our membership page at miralomapark.org/about/join. Select the type of membership and you'll be taken to the PayPal screens, where you'll enter your name and address and payment information. PayPal will notify us, and you'll receive a confirmation email from them. It's fast and easy: there's no need to complete a membership form or find an envelope and stamp!

Our membership webpage includes a form on which you can let us know of your interest in volunteer opportunities, such as helping out on committees, including safety, disaster preparedness, planning and zoning, club events, graffiti abatement and traffic calming. Just choose from the drop-down menu. If you don't see a volunteer opportunity that interests you, select "Other" and then fill in your suggestion. Complete the remaining information boxes and then click the submit button. You'll receive a confirmation email from the MPIC and a Board Member will contact you. Volunteering is a great way to help out in your community, make a difference, meet your neighbors, and work with Board Members.

You can also join or renew your membership by mailing your dues check with a down-loadable membership form from our webpage to MPIC, 350 O'Shaughnessy Blvd, San Francisco 94127 or by mailing your check with the MPIC membership form in your monthly *Miraloma Life* newsletter.

We will send reminder emails when your membership is about to expire or we'll drop a short note to you in your mailbox. Thank you for support, and please let us know how we are doing!

How to Be A Responsible Neighbor*

Keep weeds in check so they won't migrate to neighbors' property.

Pick up leaves and clippings whether on your property or on the street. Blowing or washing debris onto the street is against the law.

Adopt a gutter. Keep it debris-free. Clean sewer drains between storms.

Put cigarette butts and litter in appropriate trash bins; keep our streets clean.

Always walk dogs on leash, for the comfort of neighbors and the safety of dogs.

Park in your garage or driveway when possible, not on the street.

*These suggestions were contributed by Miraloma Park residents. Additional submissions from readers for this ongoing column are welcome.

From the President's Corner

(Continued from page 4)

fiti. Once we see it, we paint it out right away.

Many other issues the MPIC Board addresses are not handled by any specific committee: for example, advocacy on issues involving Mt. Davidson, hosting debates on local propositions, and organizing geological, historical and wildlife local tours of Mt. Davidson and Glen Park.

In January, we reach out to Miraloma Park residents and encourage everyone who don't belong to the MPIC to consider joining. You'll see a separate membership letter insert and remit envelope in this month's newsletter. You can join the MPIC at any time, and your membership is good for 12 months. Consider it a New Year's resolution! January is also when we encourage many of our members who are on a calendar year membership (Jan.-Dec.) to renew. If you are already a member, thank you for supporting the MPIC. If you are not sure if your membership is active, just send us an email or phone us to find out.

All the best to everyone in 2013!



A Woman's Eye (AWE) Gallery
678 Portola Drive, San Francisco

*A cooperative, featuring
art by local women
artists.*



OPEN EVERY WEEKEND
Saturday and Sunday 12:00-5:00
and by appointment 265-8237

AWEGallery.com

*Free Parking at the Purple Church
(across from Mollie Stone's, a.k.a. Tower Market)*



Maria Spiegel
Owner

737B Portola Drive
San Francisco, CA 94127
415-681-9501
www.pops-sandwichshop.com

Cell: 415-519-5064
E-Mail: loukoume@aol.com

PERSONALIZED DOG WALKING SERVICE



one man one dog

PETE RENTERIA

415.420.2274

SERVING THE MOUNT DAVIDSON AREA

MOLLIE STONE'S
MARKETS



Tower Market

635 Portola Drive
415-664-1600

Your Local Grocer for Fresh Meat, Seafood,
Poultry, Produce, Deli & Catering

January 2013 Neighborhood Emergency Response Training (NERT) Class Schedule

San Francisco Fire Department Headquarters, 698 2nd Street @ Townsend: Tuesday evenings 6-9 pm on Jan. 8, 15, 22, 29, Feb. 5 and 12. To register, visit <http://bit.ly/YyQvbR> or phone 970-2024.

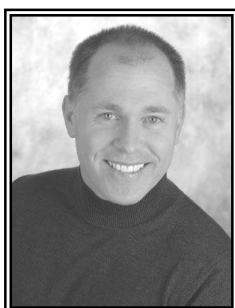
Academy of Art University, 79 New Montgomery Street @ Mission St.: 2-Day Intensive,

Thursdays, 8:30 am-6 pm, Jan. 17 AND 24. To register, visit <http://tinyurl.com/ajdrxow> or phone 970-2024.

BETTER THAN GOOD...IT'S DEVINE! (sm)



Discover what my clients have to say...



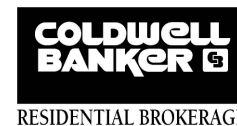
DOUG DEVINE
The Man For Miraloma!
415.425.1830
www.yourSFhome.com

"...His attention to detail and trustworthiness made two daunting tasks -- buying a new home and selling our old one -- much easier..." - Jeffrey & Carole McManus

"...His efforts are clearly reflected in the results he produced for us in this difficult market."
 - Cathy Comisky & Andris Cernavskis

"...His professionalism and knowledge of the SF market led to a quick sale when so many houses went unsold."
 - Janet & Tom Valdez

Call me when you want the HIGHEST POSSIBLE PRICE for your home!



Miraloma Park Improvement Club Membership Application

Please complete and mail with your dues to the Club address below. Make check payable to **Miraloma Park Improvement Club, 350 O'Shaughnessy Blvd., San Francisco, CA 94127.** (No cash, please). Thank you!

New Member Renewing Member Date: _____

Name: _____

Address: _____

Phone: _____ Email: _____

Please send me an email reminder to renew my membership.

Enclosed are my dues for the next twelve months (check one):

- | | |
|---|---|
| <input type="checkbox"/> \$12 Senior Member(s) | <input type="checkbox"/> \$15 Single Member |
| <input type="checkbox"/> \$25 Family Membership | <input type="checkbox"/> \$35 Supporting Member |
| <input type="checkbox"/> \$50 Contributing Member | <input type="checkbox"/> \$_____ Other |

No MPIC membership information is shared with other parties or organizations.

Telephone Directory

EMERGENCY	9-1-1
All City Calls	3-1-1
Poison Control Center	1-800-222-1222
Non-emergency Police Dispatch	553-0123
Suicide Prevention Hotline	781-0500
Ingleside Police Community Room	404-4000
Parking Complaints	553-1200
Abandoned Cars	553-9817
Security Survey/Nbd.Watch	673-SAFE
Office of Citizen's Complaints SFPD	553-1407
Narcotics Tips (anonymous)	1-800-CRACKIT
SFPD Tip Line	587-8984
Domestic/Family Violence (24hrs)	864-4722
Stray, Abused, or Dangerous Animals	554-6364
Dumped Item Pickup – DPW	3-1-1
Vital Records	3-1-1
Code Enforcement Hotline	554-3977
Graffiti Cleanup – DPW	3-1-1
Police New Graffiti Hotline	278-9454
MUNI Shelter Damage/Graffiti	1-510-835-5900
Ingleside SFPD Hearing-Impaired line	404-4009
School of the Arts	695-5700
Sean Elsbernd, Supervisor Dist. 7	554-6516

(Sean.Elsbernd@sfgov.org)

RENT the MPIC Clubhouse



MPIC Members get a discount.

Trash and recycling available.

Free parking in the adjacent parking lot.

Call 415-281-0892 for rates/availability

Or E-mail: miralomapark@gmail.com

Miraloma Park Residential Design Guidelines:

Adopted in 1999 by the SF Planning Commission to promote preservation of neighborhood character by encouraging residential design compatible with neighborhood setting, these Guidelines facilitate the complex process of permit application and design review and can prevent costly, time-consuming Discretionary Review proceedings.

The Guidelines are at www.miralomapark.org.

MPIC Board of Directors

President Robert Gee
 Vice President..... Thad Sauvain
 Recording Secretary Carl Schick
 Corresponding Secretary Dan Liberthson
 Treasurer..... Thad Sauvain
 Sergeant-at-arms Joanne Whitney

Shannon Chu
 Karen Breslin
 Kathy Rawlins
 Brian Stone
 Tim Armour

Karen Miller Wood
 Gary Isaacson
 Sue Kirkham
 Cassandra Mettling-Davis

Directory

General Inquiries for MPIC.....281-0892
 Clubhouse Manager.....281-0892
 Clubhouse Rental Agent: Steve Davis794-7885
 Website: www.miralomapark.org
 Webmaster: Ron Proctor.....281-0892
 Mayor's Office of Neighborhood Services554-7111
 Miraloma Elementary School469-4734
 Miraloma CoOp Nursery School.....585-6789
 Miraloma Playground.....337-4704

Miraloma Life Staff

Editor: Dan Liberthson281-0892
 Advertising: Brian Stone
 860-6483
 (brianstone8585@gmail.com)
 Distribution: Gary Isaacson281-0892
 Graphics: Christopher Long281-0892

Article Submission Policy

The deadline for articles for the February 2013 issue is Friday, January 18.

E-mail copies of your article (Times New Roman, 10 pt Black only font) to miralomapark@gmail.com, with "Miraloma Life" in the Subject. Or mail to: Editor, Miraloma Life, 350 O'Shaughnessy Blvd.,